

**Spring 2021 SOTE Survey  
2212 (2021)**

**San Jose State University  
SJSU**





**Course:** DATA\_225(10W) 21 - Db Systems for Analytics

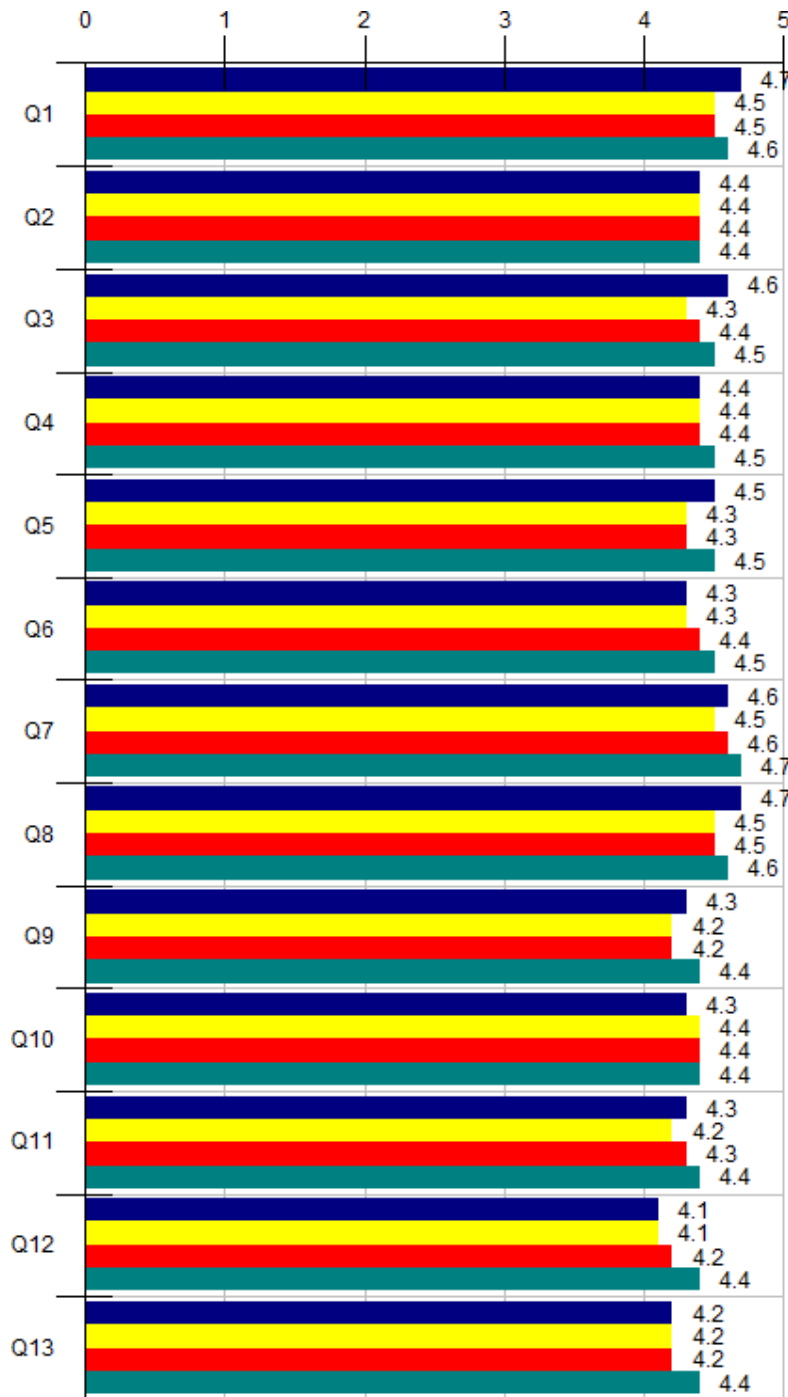
**Department:** 120-DATA

**Responsible  
Faculty:** Vishnu Pendyala

**Responses / Expected:** 55 / 56 (98.21%)

**Graph Legend**

-  Vishnu Pendyala
-  120-DATA Faculty
-  Default Faculty
-  All Faculty



VishnuPendyala

--- Survey Comparisons ---

| NEW SOTE  | Responses |    |   |   |    |    |      |         |     |         | 120-DATA |      |         |         | Default |      |         |         | All |      |         |         |
|---|-----------|----|---|---|----|----|------|---------|-----|---------|----------|------|---------|---------|---------|------|---------|---------|-----|------|---------|---------|
|   | 5A        | 4  | 3 | 2 | 1D | N  | Mean | Grp Med | N/A | Std Dev | N        | Mean | Grp Med | Pct Rnk | N       | Mean | Grp Med | Pct Rnk | N   | Mean | Grp Med | Pct Rnk |
| <b>Q1</b> Demonstrated relevance of the course content. | 37        | 18 | 0 | 0 | 0  | 55 | 4.7  | 4.8     | 0   | .47     | 479      | 4.5  | 4.7     | 72      | 510     | 4.5  | 4.7     | 58      | 74K | 4.6  | 4.8     | 46      |
| <b>Q2</b> Used assignments that enhanced learning.      | 37        | 11 | 3 | 1 | 3  | 55 | 4.4  | 4.8     | 0   | 1.06    | 480      | 4.4  | 4.7     | 56      | 511     | 4.4  | 4.7     | 55      | 74K | 4.4  | 4.7     | 36      |

|            |  |    |    |    |   |   |    |     |     |   |      |     |     |     |    |     |     |     |    |     |     |     |    |
|------------|--|----|----|----|---|---|----|-----|-----|---|------|-----|-----|-----|----|-----|-----|-----|----|-----|-----|-----|----|
| <b>Q3</b>  | Summarized/emphasized important points.            | 36 | 14 | 5  | 0 | 0 | 55 | 4.6 | 4.7 | 0 | .65  | 480 | 4.3 | 4.6 | 78 | 511 | 4.4 | 4.6 | 63 | 73K | 4.5 | 4.7 | 46 |
|            | Was responsive to                                  |    |    |    |   |   |    |     |     |   |      |     |     |     |    |     |     |     |    |     |     |     |    |
| <b>Q4</b>  | questions and comments from students.              | 32 | 15 | 5  | 3 | 0 | 55 | 4.4 | 4.6 | 0 | .86  | 478 | 4.4 | 4.7 | 50 | 509 | 4.4 | 4.7 | 40 | 73K | 4.5 | 4.8 | 24 |
|            | Established an                                     |    |    |    |   |   |    |     |     |   |      |     |     |     |    |     |     |     |    |     |     |     |    |
| <b>Q5</b>  | atmosphere that facilitated learning.              | 35 | 14 | 5  | 1 | 0 | 55 | 4.5 | 4.7 | 0 | .74  | 480 | 4.3 | 4.6 | 66 | 511 | 4.3 | 4.7 | 58 | 73K | 4.5 | 4.7 | 42 |
| <b>Q6</b>  | Was approachable for assistance.                   | 30 | 15 | 7  | 3 | 0 | 55 | 4.3 | 4.6 | 0 | .89  | 472 | 4.3 | 4.7 | 41 | 503 | 4.4 | 4.7 | 33 | 73K | 4.5 | 4.8 | 22 |
|            | Was respectful of the                              |    |    |    |   |   |    |     |     |   |      |     |     |     |    |     |     |     |    |     |     |     |    |
| <b>Q7</b>  | diversity of students in this class.               | 37 | 13 | 5  | 0 | 0 | 55 | 4.6 | 4.8 | 0 | .65  | 476 | 4.5 | 4.8 | 59 | 507 | 4.6 | 4.8 | 48 | 71K | 4.7 | 4.8 | 24 |
| <b>Q8</b>  | Showed strong interest in teaching this class.     | 41 | 13 | 1  | 0 | 0 | 55 | 4.7 | 4.8 | 0 | .48  | 479 | 4.5 | 4.7 | 72 | 510 | 4.5 | 4.8 | 58 | 73K | 4.6 | 4.8 | 51 |
|            | Used teaching methods                              |    |    |    |   |   |    |     |     |   |      |     |     |     |    |     |     |     |    |     |     |     |    |
| <b>Q9</b>  | that helped students learn important concepts.     | 32 | 11 | 6  | 6 | 0 | 55 | 4.3 | 4.6 | 0 | 1.03 | 478 | 4.2 | 4.6 | 47 | 509 | 4.2 | 4.6 | 38 | 73K | 4.4 | 4.7 | 30 |
| <b>Q10</b> | Used grading criteria that were clear.             | 30 | 15 | 8  | 2 | 0 | 55 | 4.3 | 4.6 | 0 | .85  | 480 | 4.4 | 4.7 | 47 | 511 | 4.4 | 4.7 | 38 | 73K | 4.4 | 4.7 | 32 |
| <b>Q11</b> | Helped students analyze complex/abstract ideas.    | 27 | 16 | 10 | 1 | 0 | 54 | 4.3 | 4.5 | 1 | .83  | 473 | 4.2 | 4.5 | 53 | 504 | 4.3 | 4.6 | 43 | 73K | 4.4 | 4.7 | 28 |
|            | Provided meaningful                                |    |    |    |   |   |    |     |     |   |      |     |     |     |    |     |     |     |    |     |     |     |    |
| <b>Q12</b> | feedback about student work.                       | 27 | 12 | 9  | 6 | 1 | 55 | 4.1 | 4.5 | 0 | 1.12 | 475 | 4.1 | 4.6 | 38 | 506 | 4.2 | 4.6 | 30 | 72K | 4.4 | 4.7 | 20 |
| <b>Q13</b> | Overall, this instructor's teaching was effective. | 31 | 12 | 7  | 4 | 1 | 55 | 4.2 | 4.6 | 0 | 1.04 | 476 | 4.2 | 4.5 | 53 | 507 | 4.2 | 4.6 | 43 | 74K | 4.4 | 4.7 | 26 |

**Responses:** [5A] 5=Strongly Agree=5 [4] 4=Agree=4 [3] 3=Neutral=3 [2] 2=Disagree=2 [1D] 1=Strongly Disagree=1  
**Pct Rnk:** Percentile Rank (100 is best, calculated vs. precise Mean)

**Q14 - What do you think are the strengths of this instructor's teaching?**

**Faculty:** Vishnu Pendyala

**Response Rate:** 56.36% (31 of 55)

1 teaching methods and homework pattern



2 professor has zeal to make students learn



3 passionate and nice person



4 note



5 nice lectures with explanations, interactive class



6 great slides, thorough explanations, comprehensive quizzes (we had to review all the slides several times), homework.



7 course concepts



8 The detailed explanation in the class is really helpful.



9 The amount of information he shares on the course content



Professor has clearly articulated the database concepts. I really like the idea of teaching the concepts in the class and then design homework as a project in itself. which help us to play with tools and technologies. Very well connected learning. I enjoyed it well. Professor gave us an option to choose and design our project.



Professor way of approach and making the class lively is something quite a likely ones. The classes weren't that stressful. He's one of the best professor i have seen. I like his structure of course, majorly group work. I wish to attend professor lecture in the next semester if professor is likely to take any. The course structure professor has created has made things much of a lively. Thank you so much professor for making things brighten and a good kickstart for me in masters.



12 Professor shows strong passion to teach students and willing to help and respond to student's questions quickly



13 Professor has a lot of knowledge and tried to teach a lot in the class.



Professor Pendyala motivated us to keep learning and to learn how to learn. Professor went through the course materials diligently and tried to associate current trends with the course. His weekly quizzes were sometimes tricky but helped with learning the topics then and there. He took care students were exposed to multitude of knowledge, tools, techniques that will be helpful in future careers in a short duration offew months.



Professor Pendyala emphasizes student participation in lectures to keep students engaged and focused. He focuses on the main points in lectures, which makes lectures easy to understand. In addition, he is very enthusiastic about teaching and education which I really appreciate.



Professor can summary and highlight the key learning from every class to let student has better understanding on the class. I like the idea of class note that I can remainder myself what I learn from every class.



17 None



18 NA



Knowledge

Examples

19

Live scenarios with what he teaches help us to understand more about the industry and relate the contents.



20 Instructor's knowledge about the subject.



21 Industry-oriented assignments help me a lot.



22 He is very organized and knowledgeable.



Group assignments helped to connect with other students and group members even better.

23 Asking questions in different ways makes you think harder about the topic.



24 Experience



25 Encourages collaborative and learning environment.



26 Efforts taken by professor in modelling the coursework and assignments, also lectures were very interactive.



27 Clear understanding



28 Assignments provided by the professor provides a learning opportunity and deeply enhances the knowledge and understanding of a variety of tools and concepts related to the course.



29 Always willing to assist and provide more when possible.



1) Provides well descriptive lecture slides

30 2) Explains concepts clearly

